

Color Schemes

An organized arrangement of colors
based off of the color wheel

Monochromatic

- Using one color plus its shades and tints



Example:
Blue +
Tints (mixed with
white) +
Shades (mixed
With black)



Yellow + shades+Tints



Green + Shades+Tints



Yellow + Shades+Tints

Complementary

- Using one color and the color opposite on the color wheel
- Examples of Complementary color schemes...
 - Red and green
 - Blue and orange
 - Yellow and purple



Blue and orange

Jay Ham

Red and green





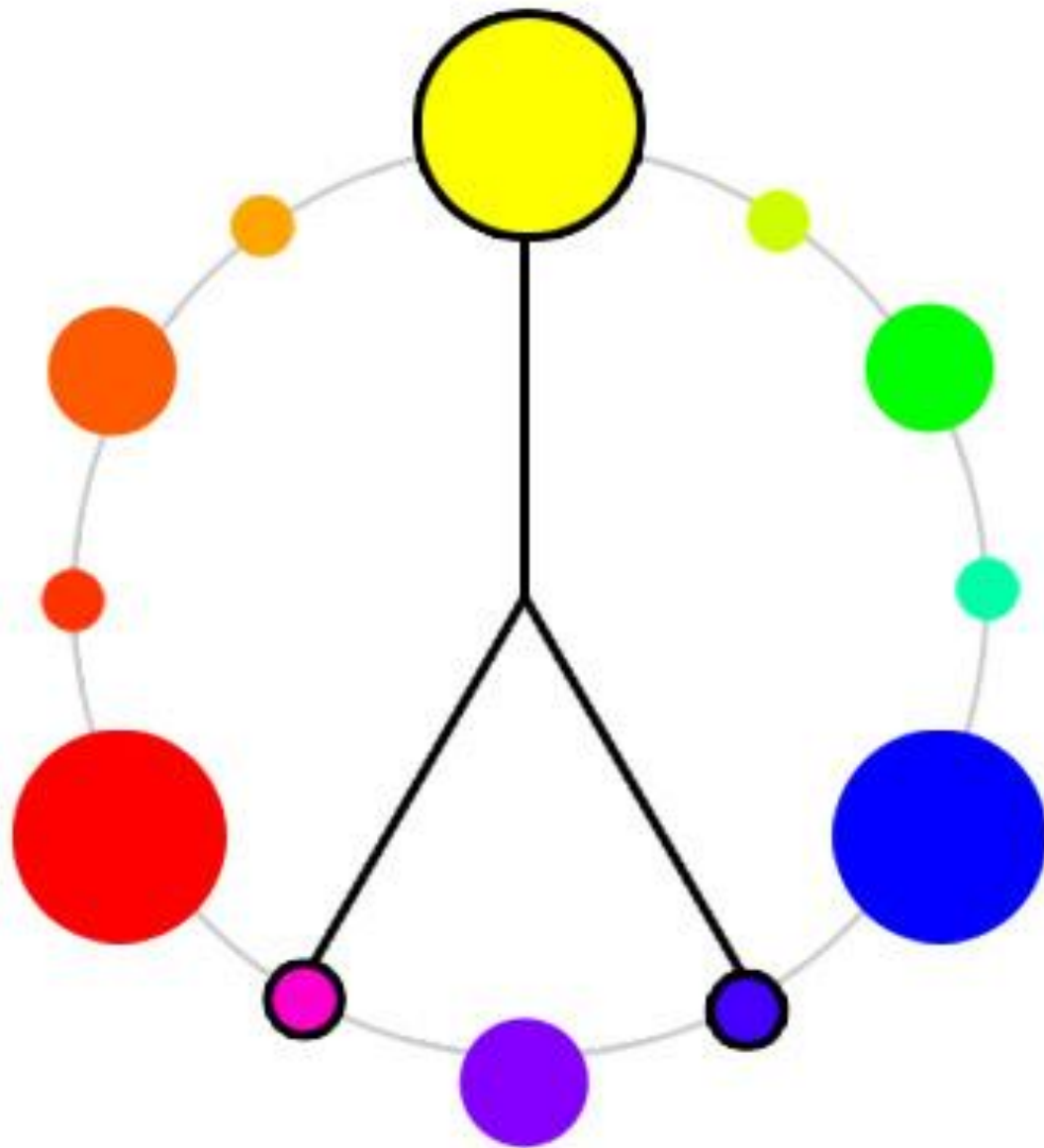
Blue + Orange

Orange + Blue

Red + Green

Split Complementary

- One color plus the two colors on either side of its complement
- Examples-
 - Purple + yellow orange + yellow green
 - Blue + Red orange + yellow orange
 - Red + Blue Green + Yellow Green



A detailed oil painting of a hand playing a guitar. The hand is rendered in a vibrant yellow, with highlights and shadows that give it a three-dimensional appearance. The guitar is a light-colored electric guitar, possibly white or cream, with a dark fretboard and strings. The background is a mix of dark blue and purple, with some yellow and red accents. The overall style is expressive and somewhat abstract, with visible brushstrokes and a rich color palette. The text 'Yellow + Red Violet + Blue Violet' is overlaid on the upper part of the image, indicating the colors used in the painting.

Yellow + Red Violet +
Blue Violet

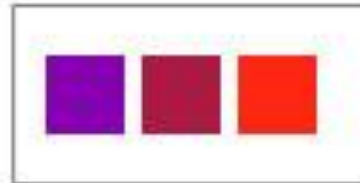
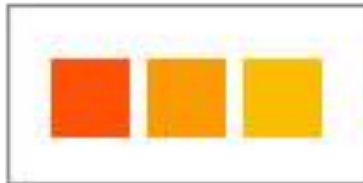


Blue + Red Orange + Yellow orange

Analagous

- Using three colors located beside each other on the color wheel
- Examples
 - Red + red violet + violet
 - Blue + Blue green + green
 - Yellow Green + Yellow+ Yellow orange

ANALOGOUS COLOR SCHEMES





Yellow orange + Yellow + yellow green



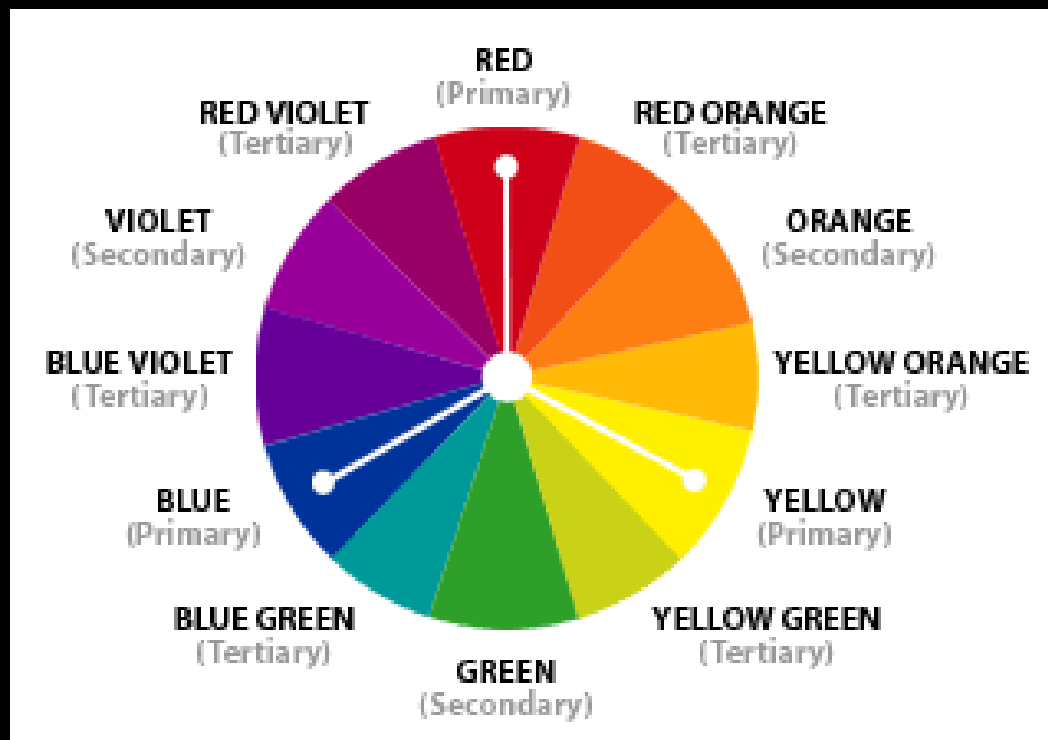
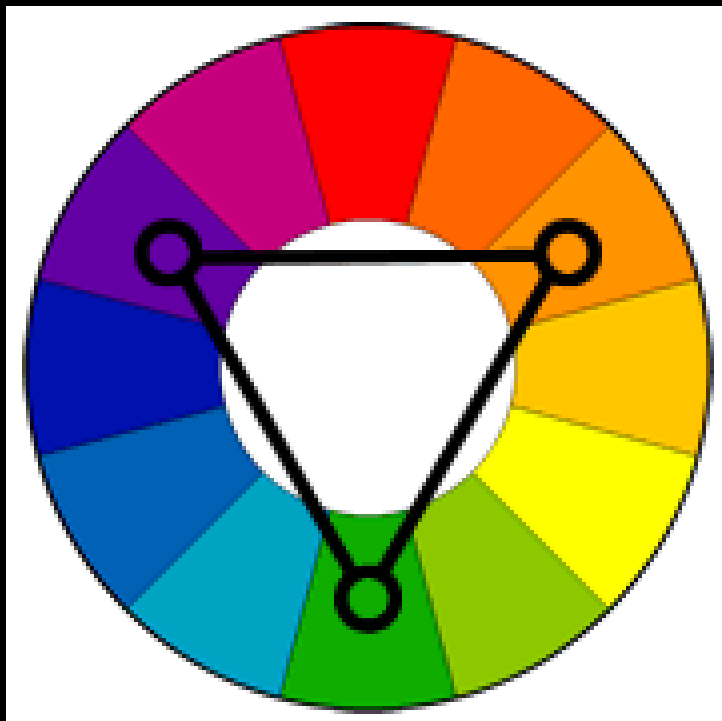
Red Orange + Orange + Yellow Orange



Blue Green + Blue + Blue Violet + Violet

Triadic

- Using three colors located equal distance away from each other on the color wheel
- Examples
 - Red + Yellow + Blue
 - Green + Purple + Orange





Red + Blue + Yellow





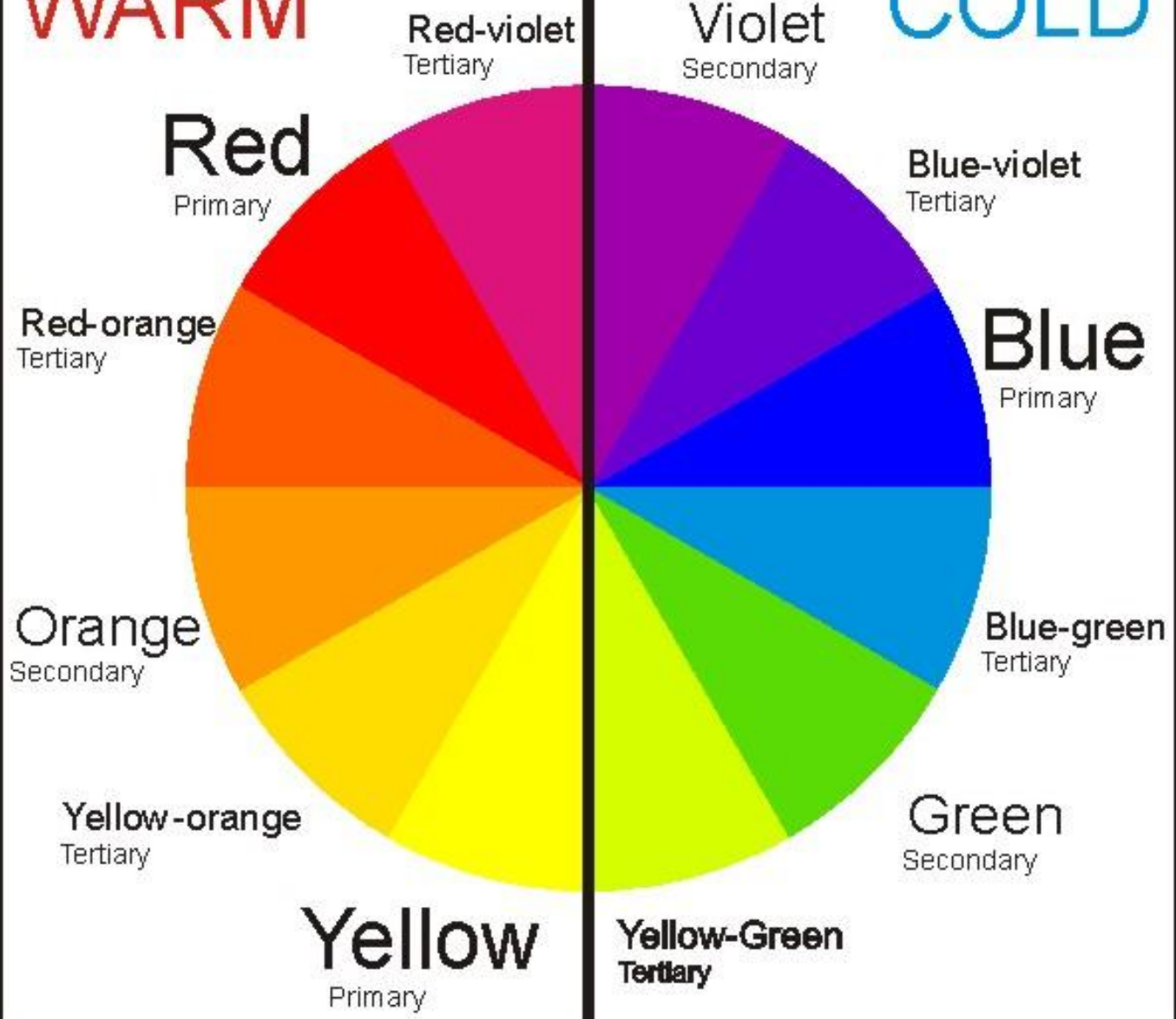
Warm/Cool Colors

Warm Colors – Red, yellow, orange

Cool colors – Blue, Green, Violet

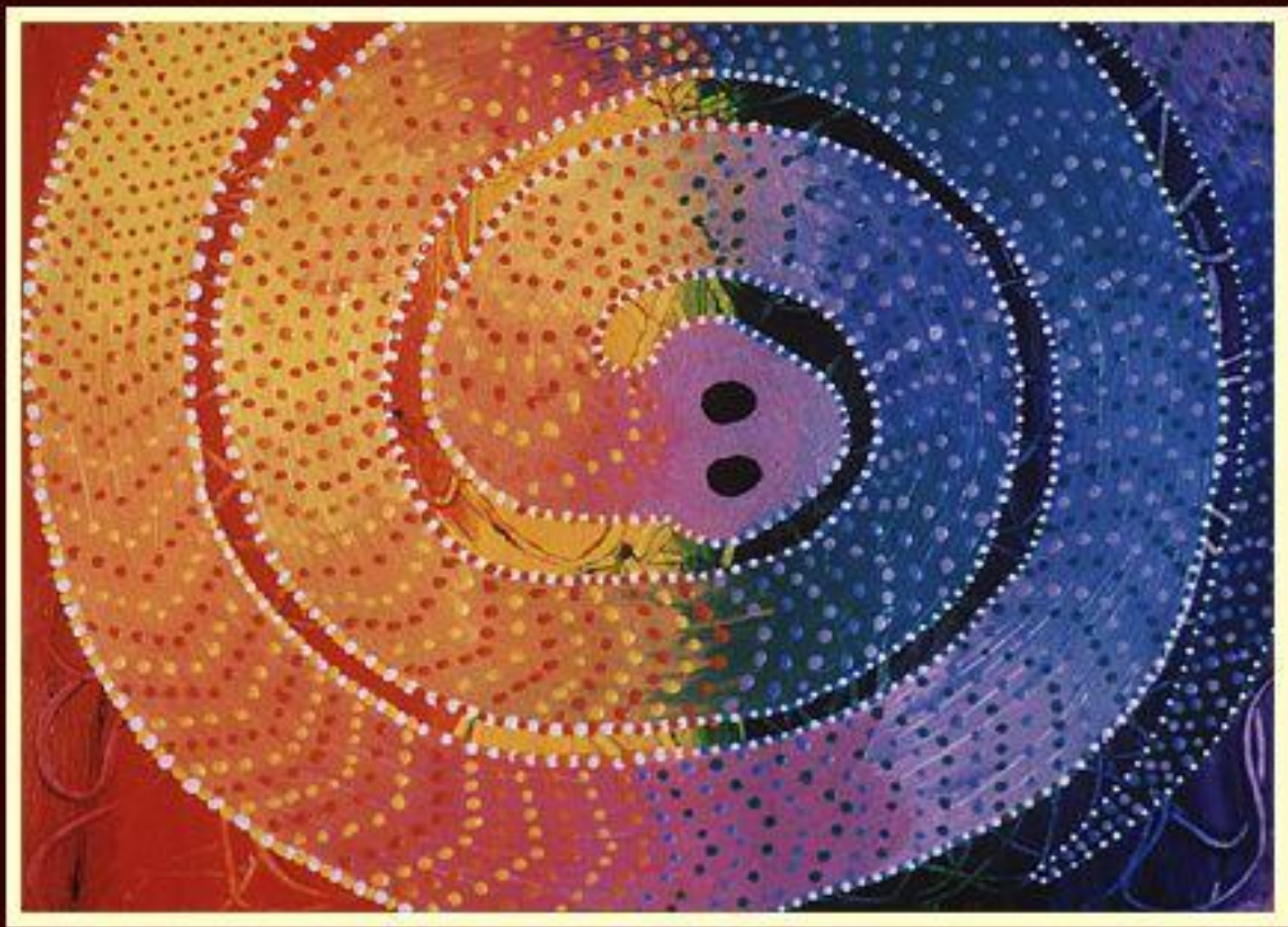
WARM

COLD





Lainid Abramov



What color schemes are the following images portraying?





©Jeanne Wildermuth, intricateart.com









Color is Emotion

“Color is not given to us in order that we should imitate nature. It was given to us so that we can express our emotions.” – Henri Matisse

What emotions do you associate with the following colors?

RED

YELLOW

BLUE

GREEN

PURPLE

ORANGE

Color Symbolism

Each color has associated symbolism built in.
Can you suggest some of the symbols for...

-Red

-Purple

-Green

-Yellow

-Blue

-Orange

-Red

In China, means good luck and is often used in celebrations or weddings

-Purple

Often symbolized royalty, Japan it symbolizes privilege and wealth

-Green

money, recycling, new, Libya – only flag with solid color

-Yellow

- Happiness, insanity?, Egyptians believed it was the color of the gods

-Blue

relaxation, calming, world's most popular color, India – Lord Krishna

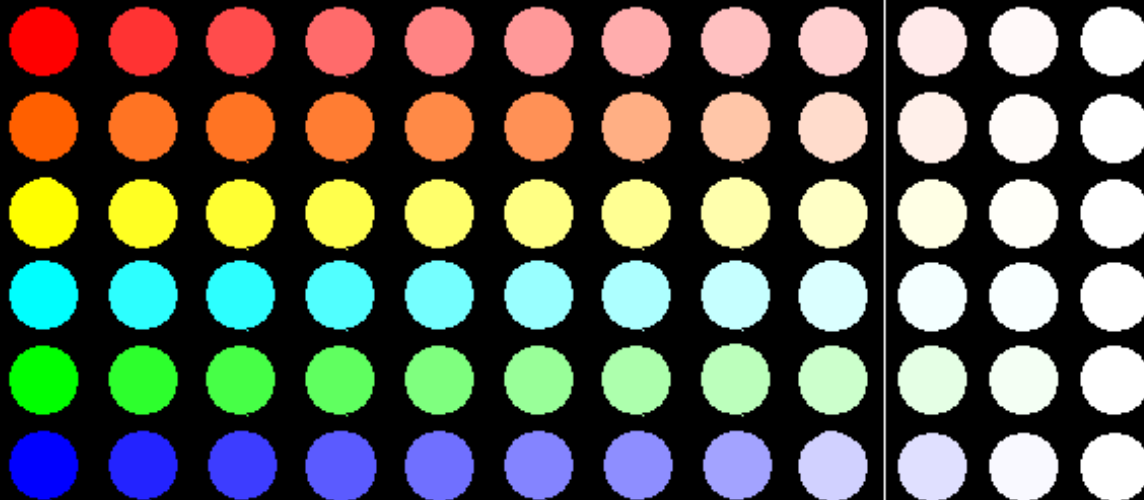
-Orange

autumn, color of creativity, Hinduism – believed to be a sacred color



Tints and Shades

- Saturation is the measure of pigment in a color
- The primary colors are the most saturated colors on the color wheel
- Light colors are called tints and are made by adding white (such as acrylic or tempera paint) or water (such as in water colors)
- Dark colors are called shades and made by adding black (acrylic or tempera paint) or water (such as in watercolor)



Color Schemes

An organized arrangement of colors based off of the color wheel

Monochromatic

- Using one color plus its shades and tints



Example:
Blue +
Tints (mixed with
white) +
Shades (mixed
With black)



Yellow + shades+Tints



Green + Shades+Tints



Yellow + Shades+Tints

Complementary

- Using one color and the color opposite on the color wheel
- Examples of Complementary color schemes...
 - Red and green
 - Blue and orange
 - Yellow and purple



Blue and orange

Jay Ham

Red and green





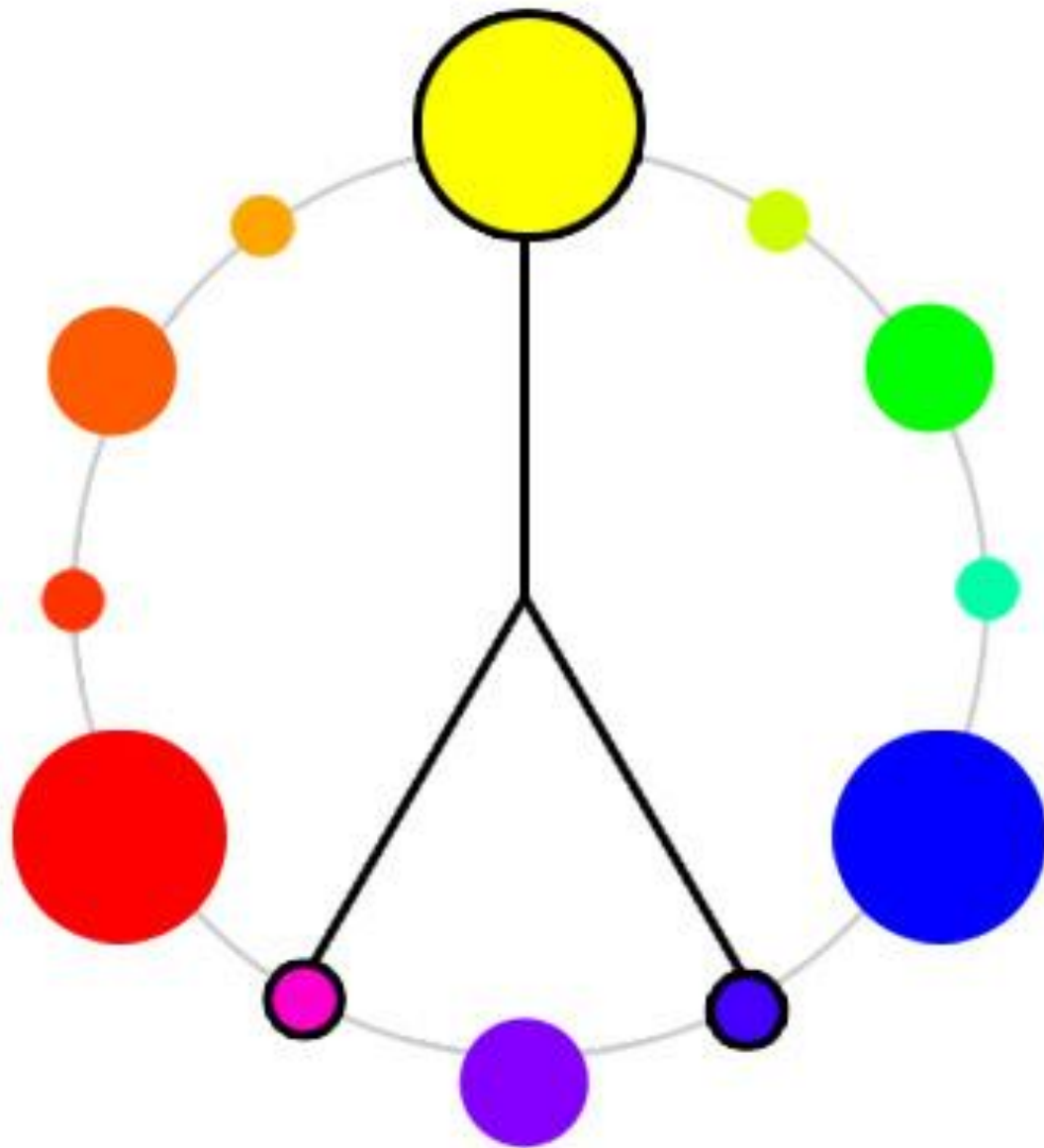
Blue + Orange

Orange + Blue

Red + Green

Split Complementary

- One color plus the two colors on either side of its complement
- Examples-
 - Purple + yellow orange + yellow green
 - Blue + Red orange + yellow orange
 - Red + Blue Green + Yellow Green



A close-up painting of a hand playing a guitar. The hand is rendered in a vibrant yellow, with the fingers positioned to strum the strings. The guitar body is a mix of white and light purple, with a dark purple pickguard. The neck is a rich brown with dark frets. The background is a swirling mix of blue, purple, and yellow. The text 'Yellow + Red Violet + Blue Violet' is overlaid in the upper center.

Yellow + Red Violet +
Blue Violet

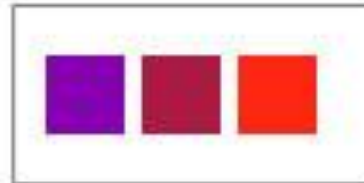
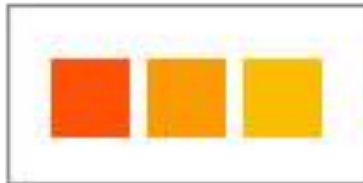


Blue + Red Orange + Yellow orange

Analagous

- Using three colors located beside each other on the color wheel
- Examples
 - Red + red violet + violet
 - Blue + Blue green + green
 - Yellow Green + Yellow+ Yellow orange

ANALOGOUS COLOR SCHEMES





Yellow orange + Yellow + yellow green



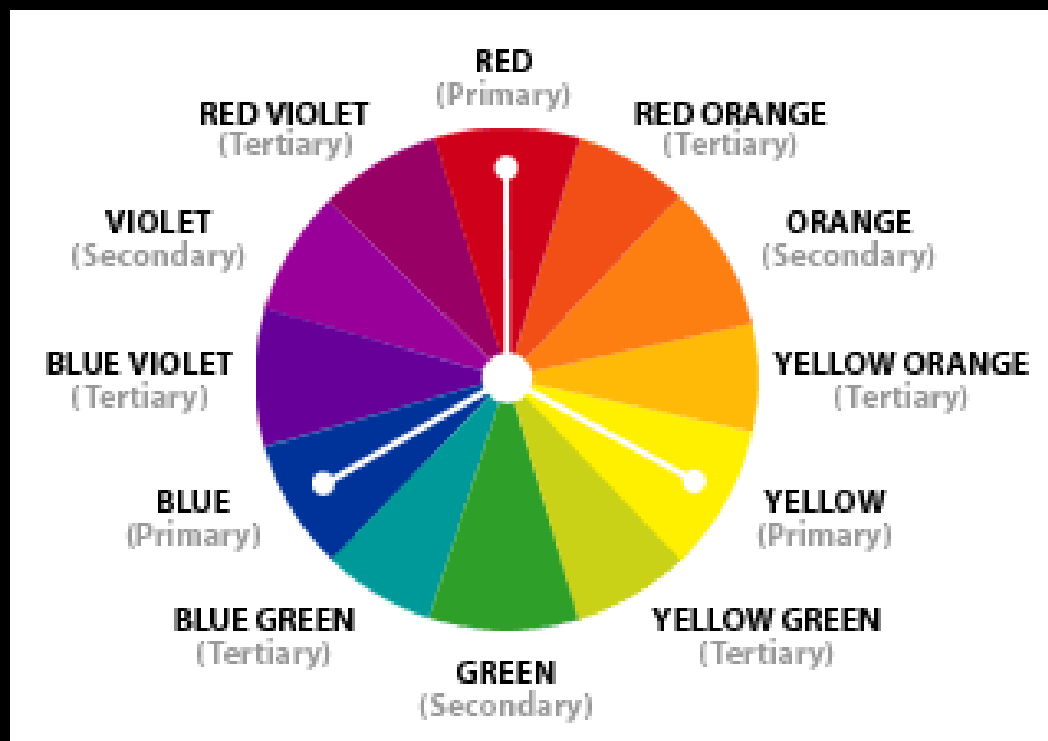
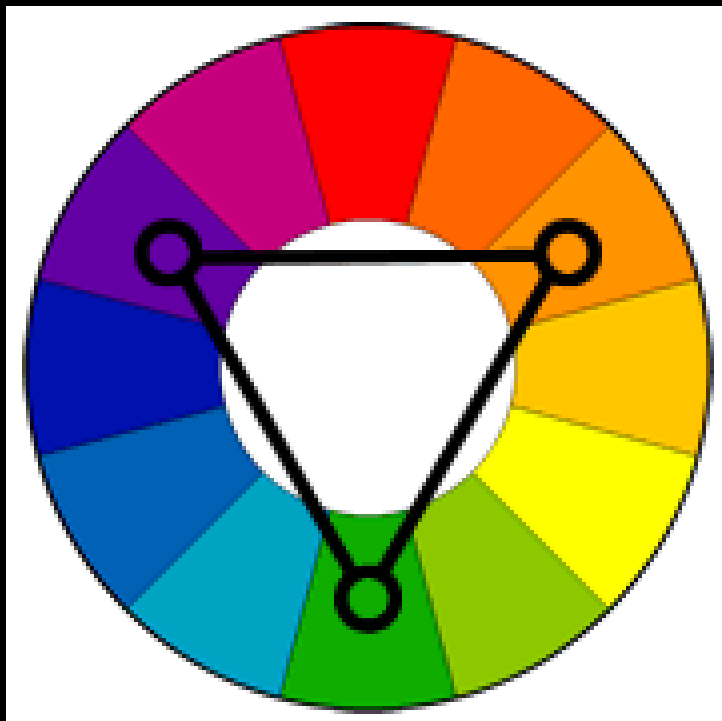
Red Orange + Orange + Yellow
Orange



Blue Green + Blue + Blue Violet +
Violet

Triadic

- Using three colors located equal distance away from each other on the color wheel
- Examples
 - Red + Yellow + Blue
 - Green + Purple + Orange





Red + Blue + Yellow

2011





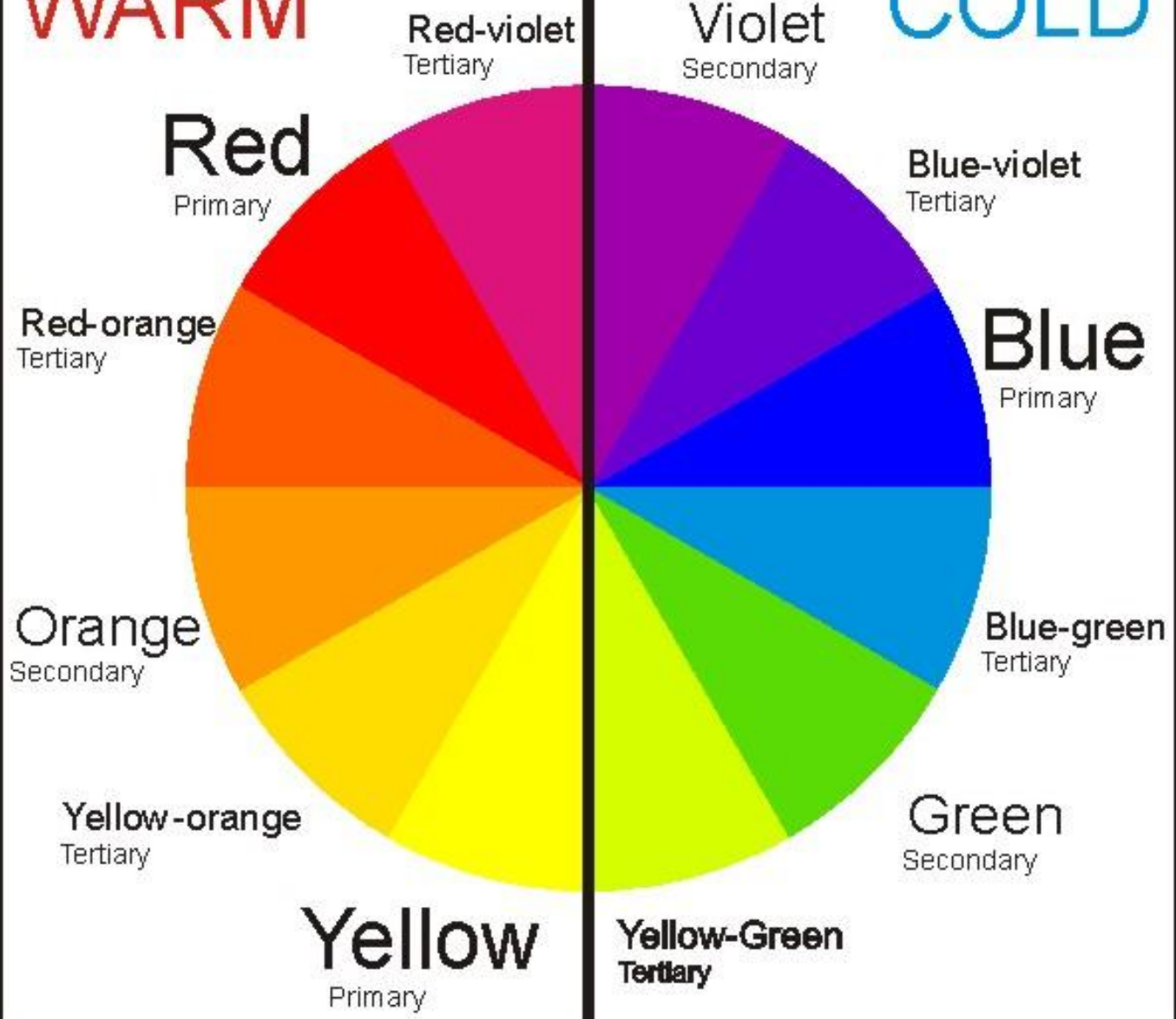
Warm/Cool Colors

Warm Colors – Red, yellow, orange

Cool colors – Blue, Green, Violet

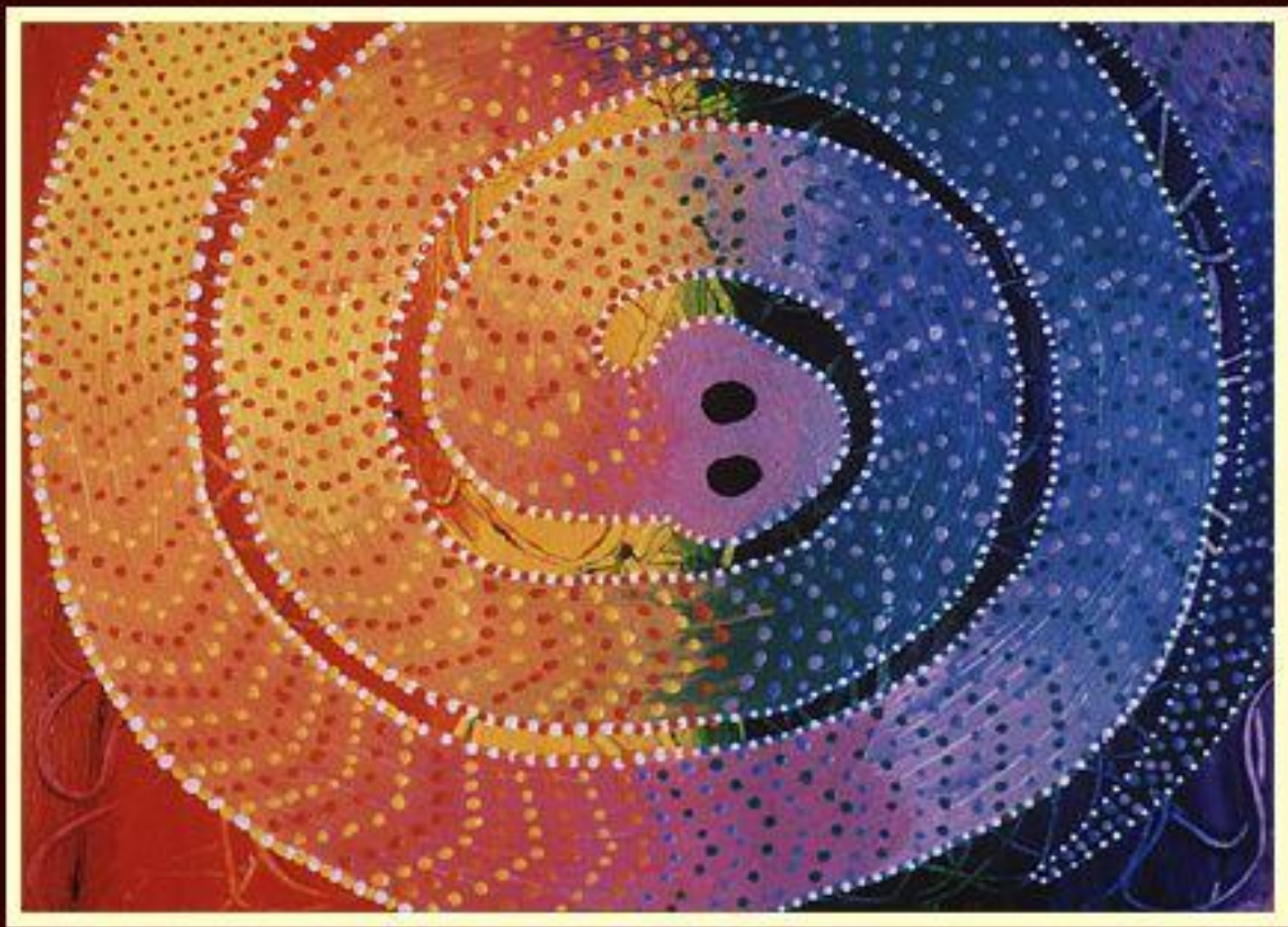
WARM

COLD





Lainid Abramov



What color schemes are the following images portraying?





©Jeanne Wildermuth, intricateart.com







- <http://www.youtube.com/watch?v=nX0DHd5QNS8>